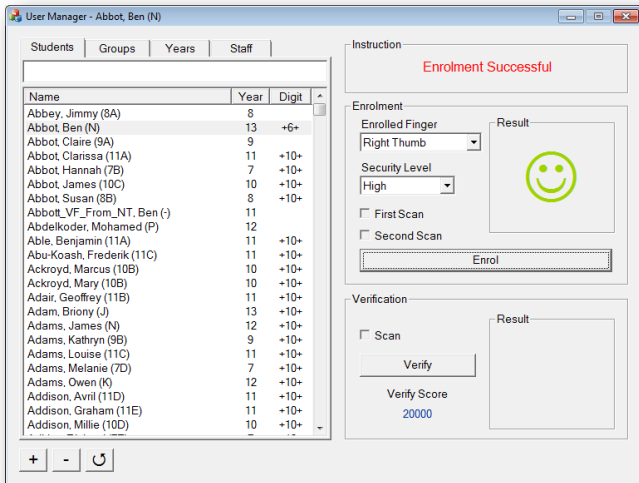


Live Register

Education Edition



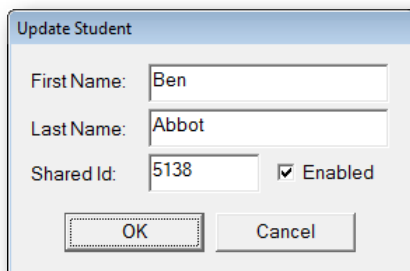
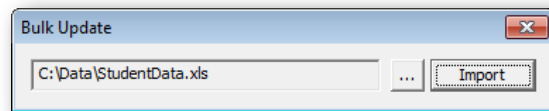
The **Live Register Education Edition** combines all the management tools needed for biometric print and copy release.



Designed to be easy to use so that schools and colleges are able to manage the system by themselves. It is scalable and can be used for installations of all sizes from a single printer/copier to institutions with up to 1,000 devices.

For smaller installations, the server components and User Manager application can be installed on a single desktop PC. Larger installations will want to install the server components on a dedicated server and install the User Manager application on multiple PCs.

Users can be imported from a spreadsheet or directly from most MIS systems automatically.



The shared identifier is the code known to the print/copy control software for this user.

Users can be temporarily barred from the system.

Features

- ◆ SQL Server Database
- ◆ User Management Tools
- ◆ Automated Backup
- ◆ Simple Installation
- ◆ Phone Support
- ◆ Bulk import

Options

BioStore / SIMS / CMIS / e1
iSAMS / Integris / PASS

Recommended

Microsoft Windows 7
Microsoft Server 2008
SQL Server 2008

MFT3200

IP Biometric Print/Copy Adapter

Use the MFT3200 to secure your print and copy devices with biometric technology.



The unit interfaces the USB fingerprint scanner with Multi-Function Devices (MFD) which are compatible with Human Interface Device (HID) readers. This adapter connects a fingerprint scanner directly to the MFD.

Remote configuration is easy using the integrated web management interface. The unit

is an IP enabled device and can be set for DHCP or assigned a static IP address.

Once the unit is configured with the address of the Live Register Server all management of users and configuration is performed centrally.

Features

Web management (HTTP)
USB sockets for biometric scanner and MFD
MFD bracket (optional)

Requirements

SecuGen Hamster Plus (HSDU03M)
Live Register Server
Mains power socket
Network socket

Order Information

Code	Description
LREE	Live Register Education Edition
HSDU03M	SecuGen Hamster Plus
MFT3200	IP Biometric Print/Copy Adapter
BIOSTORE	BioStore Integration
SIMS	SIMS Integration
SUPPORT	12 months extended warranty



ITS: Info Technology Supply Ltd

2 Hobbs House, Harrovian Business Village, Bessborough Road,
Harrow, Middlesex, HA1 3EX.

Tel: +44(0)20 8869 1950 Fax: +44 (0)20 8869 1966

Email: info@itsltduk.com Web: www.itsltduk.com