

## The cPad Touch Screen Print & Copy Terminal

---



---

## Introducing the cPad Touch Screen Print & Copy Terminal

The cPad terminal is a touch screen unit with an integrated PaperCut interface that plugs into the desired MFD via an access port. It is hardware neutral and can turn almost any copier or MFD into a PaperCut tracked and controlled machine. The cPad is a new hardware terminal that has been developed in partnership with PaperCut and aims to bring the touchscreen functionality seen on embedded solutions to a vendor independent hardware offering. The cPad can also be used for secure and Find-Me print release on standard desktop printers.

## Print & Copy Control

The cPad terminal is compatible with the worlds leading print and copy management software including PaperCut MF and can be mounted on the copier or MFD, set on a tabletop, fastened to a counter or wall or situated on an especially designed stand.

## Features of the cPad Terminal

**Appearance** The cPad measures 188L x 128W x 37H mm and features a user friendly 7" colour display screen with a resolution of 800 x 480.

**Flexibility** Users can identify themselves to the cPad terminal in various ways, via the onscreen QWERTY keypad by entering their network username and password or a numeric ID or by presenting their ID card including those that use magnetic stripe, proximity and barcode technology. The cPad can also be used in conjunction with ITS' LiveRegister Biometric system.

**Connectivity** The cPad Includes a built in 2 port network switch which allows your printer/MFD connection to be shared eliminating the cost and inconvenience of an extra Ethernet connection.

## Benefits of the cPad Terminal

**User Experience** Once identified the user is presented with a personalised interface displaying their credit and also the costs for the release of jobs from the connected device. The user can easily select one or more documents from the presented list for release, deletion or even save to release later.

**Corporate Identity** The cPad enables an organisation to reflect their corporate colours and logo on the screen or even display internal messages when the cPad is not in use.

**Compatibility** The cPad terminal is compatible with 99% of the brands and models of network printers and multi functional devices making it the ideal addition to any existing hardware. As it is manufacturer independent it can also be easily transferred between devices ensuring your investment can be used for many years to come.

## Specifications

**Display**  
7" backlit colour LCD

**Input**  
Touch screen

**Identification**  
Login, magnetic stripe, barcode, proximity cards

**Networking**  
TCP/IP, DHCP, or static IP

**Configuration**  
Graphical local or remotely via VCC flash utility

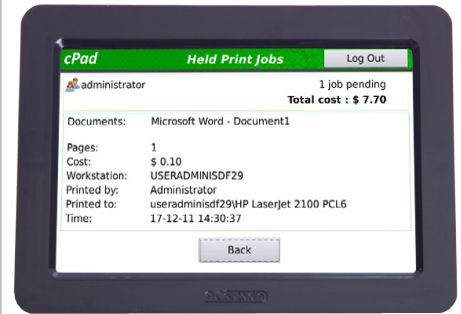
**Connectivity**  
6 x serial, 2 x 100baseT

**Copier Control**  
Pulse or steering (8 price)

**Updates**  
Remotely, via network

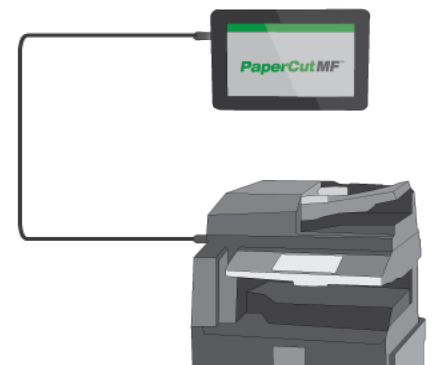
**To view a cPad Terminal video tour please visit the print and copy terminals section on:**

[www.printandcopycontrol.com](http://www.printandcopycontrol.com)



Time	Documents	Pages	Cost
14:44:41	Microsoft Office Outlook - Memo ...	4	\$ 0.40
14:44:36	Microsoft Office Outlook - Memo ...	1	\$ 0.10
14:44:24	http://www.teleflora.com/birthday...	4	\$ 0.40
14:44:09	http://www.teleflora.com/?s=t&sr...	1	\$ 0.10
14:43:14	http://dul.startnow.com/	1	\$ 0.10

Use Copier Print All Job Details Print Job Cancel Job



© Copyright ITS Ltd.